



# CFA Compressor

*Trusted name, flexible solutions, dependable support.*

The unique, couple-free design of the CFA puts opposing compressor throws directly in-line, decreasing the overall vibration. Another benefit to the couple-free design is the diminished bending movement of the crankshaft, reducing fatigue. The CFA design reduces the requirement for foundation mass. Compression flexibility is achieved through a full line of tandem cylinders, allowing up to four stages of compression on a two-throw CFA.

## Standard Features

The crankshaft on the CFA is forged from a solid billet of heat-treated SAE 4140 steel. The standard lubrication system contains a crankshaft gear-driven oil pump, system relief valve, crankcase strainer, spin-on type full-flow oil filter, and filler/breather. The pressurized suction cylinder lubrication system includes stainless steel tubing and fittings, divider block, lubricator flow meter and no-flow shut-down.



## Couple-Free Design

**Connecting Rods** The wide center rod is equal in weight and strength to the total of the two narrow rods.

**Crosshead pins** These have oil passages to provide pressure lubrication. They are also bored out to accommodate a selection of weights for final balancing of the assembly.

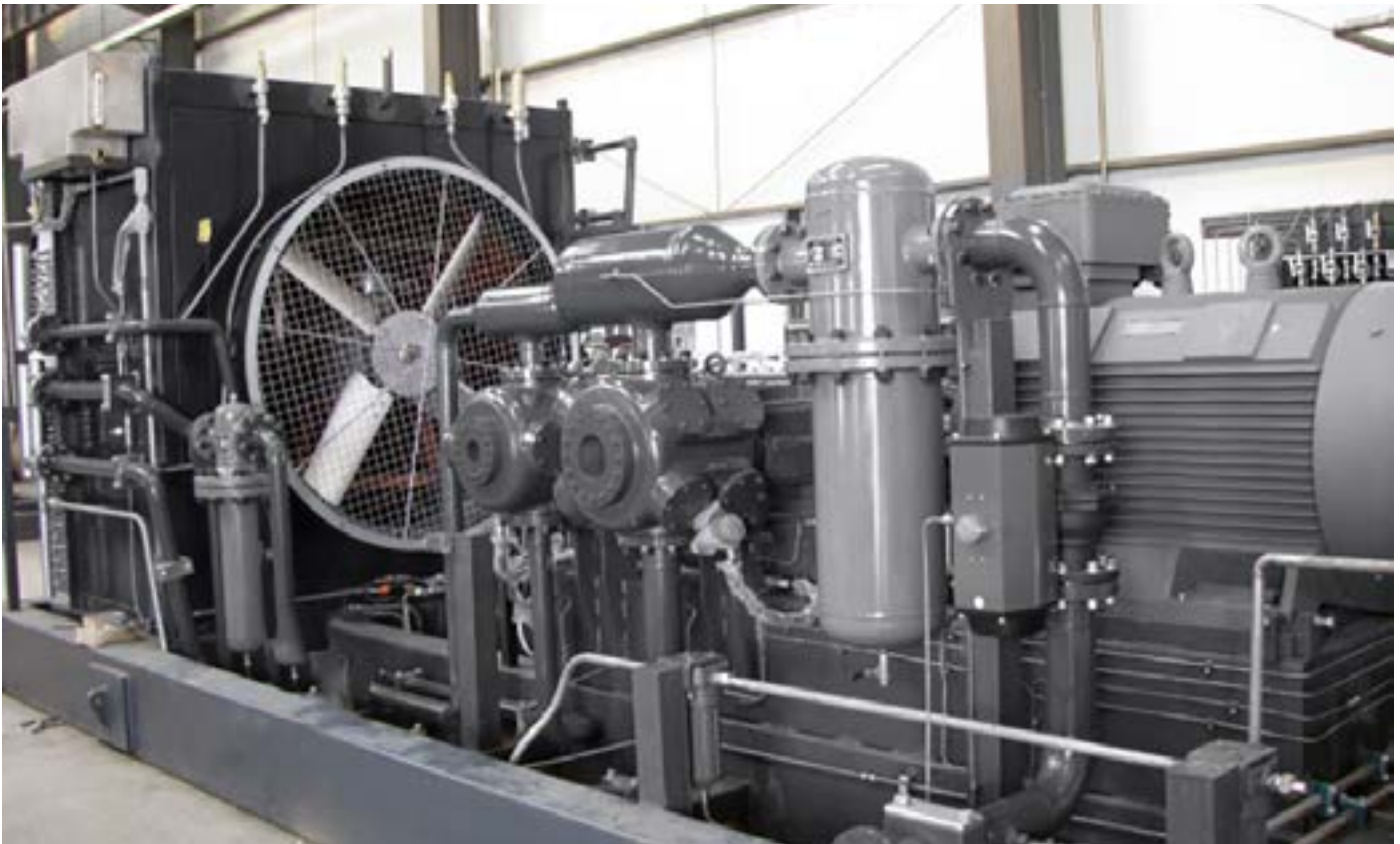


## Specifications

- Balanced opposed to  $\pm 60$  grams
- Up to 580 hp
- 3 in. stroke (76 mm)
- 900 fpm (4.57 m/sec) piston speed @ 1800 rpm
- 26,000 lb. (116kN) total gas rod load

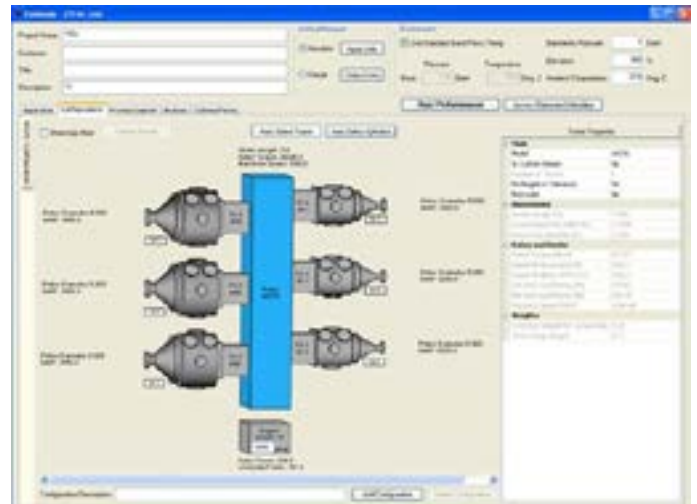
## Applications

- CNG
- Gathering
- Boosting
- Processing
- Offshore Platforms
- Air
- FPSO



## Designed for flexibility

- Over 175 years of compression experience.
- We offer a full line of air-cooled and water-cooled, lubricated and non-lubricated, lined and unlined cylinders.
- Our frames are one-piece, ductile iron with a heavily ribbed casting and tie-bolt construction to provide long life.
- We insist that all parts meet stringent quality standards, such as our split shell, steel-backed, tri-metal main and connecting bearings.
- Superior compressors allow up to 2% H<sub>2</sub>S without special trim.
- Our frames extend to 9000 hp with our WG model and 1800 rpm with our CFA.



Compass™ Sizing Software is the most comprehensive and flexible sizing software available. Available through your GE representative.

GE Oil & Gas  
16250 Port Northwest  
Houston, TX 77041

24/7 customer support: +1 844 RECIP GE  
www.engagerecip.com

GE Reciprocating Compression, LLC is a subsidiary of the General Electric Company. The GE brand and logo are trademarks of the General Electric Company. © 2014 GE Reciprocating Compression. The \* denotes a trademark of the General Electric Company.

GEA31371 (04/2016)