



CFH/CFR Compressors

Introducing GE's CFH & CFR compressor—the future of the 1500 RPM market

52,000	pounds of rod load
1360-3400	max HP
1200-1500	RPM

Our couple-free crankshaft configuration provides low mechanical vibrations that allow lower fatigue stresses and higher reliability. Additionally, this allows easier installation, particularly on portable skids and offshore platforms, and on foundations with smaller anchoring/stiffening structures.

Solutions in Every Aspect of the Design

Balanced connecting rods

Our unique balanced loading allows for reduced packaging costs. Additionally, low vibrations at full speed and full load make this design particularly effective for offshore applications.

Stiff crankcase

The crankcase's low center of gravity and narrow width, combined with the innovative central cross tie bar, produces a stiff and stout design, calculated with a first natural frequency of 10 times or higher. The innovative tie bar design efficiently uses the space between throws to increase frame stiffness, enabling a smoother operating unit.

Low inherent clearances designed for wellhead and gas gathering applications

Lubrication system with common, integrated oil header

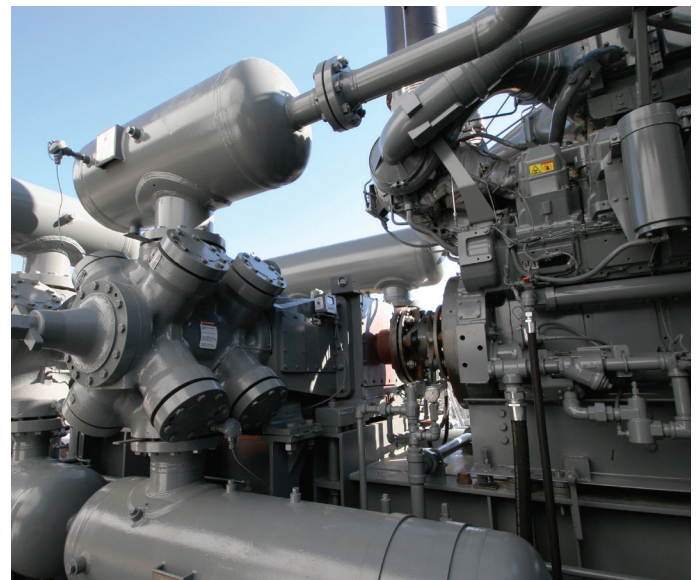
Oil header and oil passages are integral in the frame casting. This is an environmental improvement with increased simplicity and serviceability.

Tailored valves for specific applications

If needed, GE can tailor valves for specific gas compositions. While our standard valve is excellent for gas gathering applications, tailored valves can be designed for heavier or lighter gases.

Extensive product testing and validation

Finite elements analysis for both system and component levels with over 10 million cycles fatigue testing at 100 percent crankpin load results in a sturdier frame and reciprocating components.



Engineering Data

		CFH 6		CFR 5	
		CFH 62	CFH 64	CFR 52	CFR 54
No. of cylinder throws		2	4	2	4
RPM Range	max	1200	1200	1500	1500
	min	600	600	600	600
Maximum power	hp	1360	2720	1700	3400
	kW	1014	2028	1267	2535
Rated power per throw	hp	680	680	850	850
	kW	507	507	633	633
Stroke	inches	6	6	5	5
	mm	152	152	127	127
Piston rod diameter (in.)		2.5	2.5	2.25	2.25
Crankpin and crankmain diameter (in.)		6	6	6	6
Maximum inertial gas rod loads	Tension (MGRT)	55000	55000	55000	55000
	Compression (MGRC)	55000	55000	55000	55000
	Total peak to peak	110000	110000	110000	110000
	Net rod load allowed (max)	52000	52000	48000	48000
Piston speed at max RPM	ft/m	1200	1200	1250	1250
	m/s	6.1	6.1	6.35	6.35
Sump capacity (gal)		20	40	20	40
Lube oil flow (gpm)		10	20	10	20
Torque (ft-lbs)		5952	11905	5952	11905
Frame weight (lbs)		6500	13500	6500	13500
	width (in.)	73	73	73	73
	length (in.)	55.6	99.6	55.6	99.6
	height (in.)	30	30	30	30

GE Oil & Gas
 Reciprocating Compression Products
 16250 Port Northwest Drive
 Houston, TX 77041 USA

www.engagerecip.com
 T: +1 844-RECIP-GE (US/Canada)
 T: +1 713-354-1299 (International)